

GREENLINES

Mary Smith Associates
Landscape Architects & Planners
30 Chestnut Street, Quincy, MA 02169

617.770.4717 Fax 617.773.7655
msa@marysmith.com

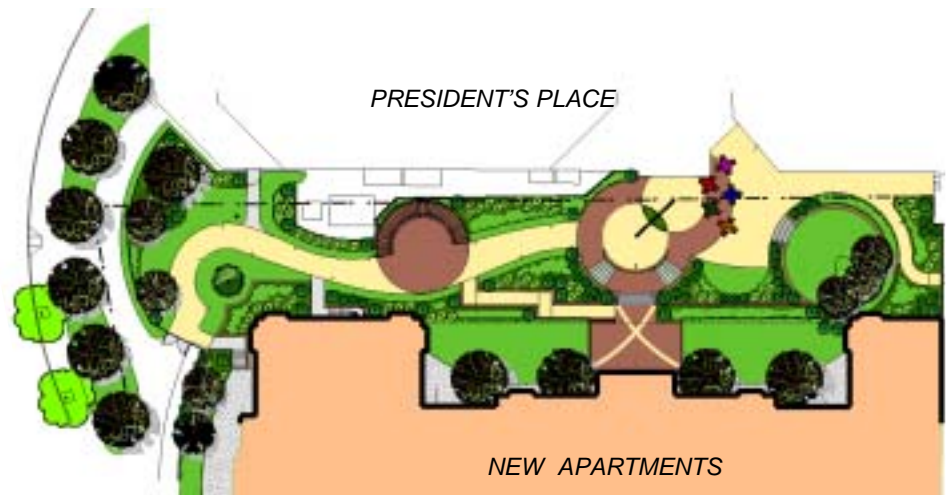
Volume 14, No. 1

Lady's Mantle after a rainstorm is shimmering with drops of water.

A DRAMATIC COURTYARD IN QUINCY CENTER

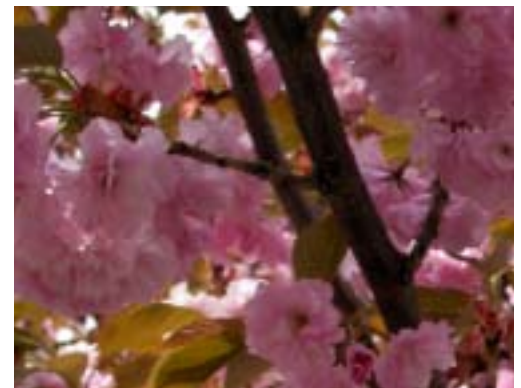
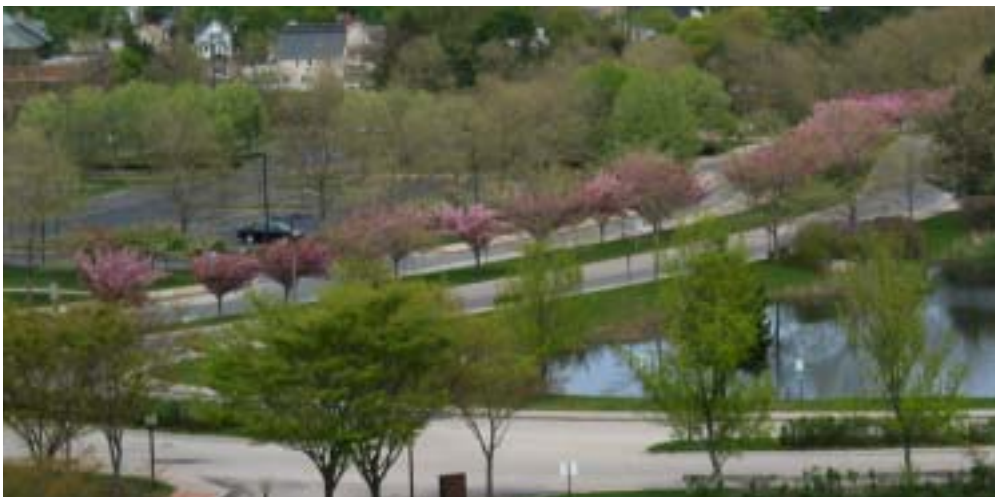
A NARROW SPACE BECOMES A BEAUTIFUL TRANSITION

The narrow space between President's Place and the new ten story apartment building could have been lost in shadow. Instead, the developers decided to install a landscape we designed that uses many plants with light colored leaves, stainless steel furnishings, lighting and arbor---all guaranteed to reflect and refract light within the courtyard.



SPRING IN QUINCY'S CROWN COLONY OFFICE PARK

KWANZAN CHERRY TREES IN FULL BLOOM CREATE A SWATH OF PINK THROUGH THE MIDDLE OF THE SITE.



A mile long line of Kwanzan Cherries planted double wide in the median strip in Crown Colony has developed into a jaw-dropping display of cheerful pink just in time to cure the winter blues.



OVERFLOWING FIELDS AND FLOWER GARDENS

It seems a garden is always a balance between foliage and flowers. To the left, a pink flower scheme unifies the planting while foliage supplies balance in texture, size and variation. Sometimes it's the other way around, as with the grassy wildflower field below. Foliage dominates and flowers add some sparkle.

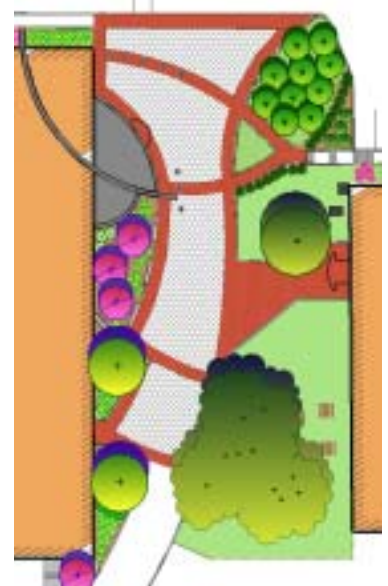


TRICKS OF THE TRADE

This new architectural entrance at Chomerics, in Woburn, was added to a big brick box to make a dramatic corporate statement. We took shapes from the entrance and used them to make a grand arrival plaza. We tied two buildings together with an arc that extended the curved entry across the plaza to a retained planting wall. We were able to disguise the driveway between the two buildings by carrying the graphic pattern across it using two different colors of pavers.



Now the plaza can be used by employees for outdoor seating and events, where before there was only an asphalt driveway.



Plan view

TRADITIONS OF WAYLAND

A large estate house and twenty-six surrounding woodland acres near the Sudbury River has been converted for assisted and independent living. We made the entry outdoor dining patio feel like home with flowering trees and lush flower beds.

