



PLAYSCAPE AT 233 BLUE HILL AVENUE

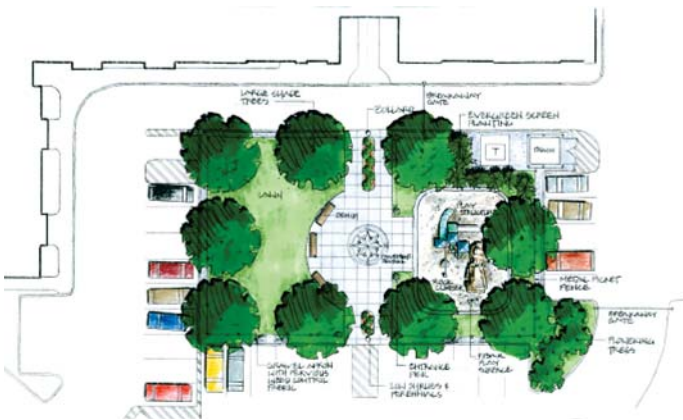
Roxbury, MA

THOMAS I. ATKINS APARTMENTS

Located at 233 Blue Hill Avenue this new urban apartment complex was designed and built as a model environmentally sensitive community. Throughout the landscape design process emphases was placed on provisions to enhance energy efficiency, minimize storm-water discharge and reduce light and heat pollution. Rain-gardens were used to capture and absorb rainwater and replenish soil and ground water. Plant materials were selected for their tolerance to dry urban conditions and hardscape materials were selected for their high reflective characteristics to mitigate the urban heat-sink effect. Responding to community desires an integral aspect of the project was a shaded plaza area, adjacent lawn and playscape with play-structure, rock sculpture climber and resilient surfacing.

PLAYSCAPE DESIGN

As landscape architects we find that design for children’s play is one of our most challenging assignments. An opportunity to envelop a fully functional, colorful, exciting sculpture-like feature into a project juxtaposed to a natural landscape is an especially exciting task. As a site activity area and feature, the playscape brings a special vitality to any development whether a school campus, park, or residential development. Playscape systems are now available wide variety of styles from traditional play apparatus such as swings, slides, and conventional climbers to rope and rock sculpture climbers. All of which must be safe and age appropriate yet provide a hierarchy of challenge to keep children involved and active.



SCHEDULE & BUDGET

Period of Service: 2007-2010
 Construction Value: \$340,000.00

TEAM

Client: Nuestra Comunidad Development Corp.
 Architect: The Architectural Team, Inc.
 Landscape Architect: MKA Landscape Architects